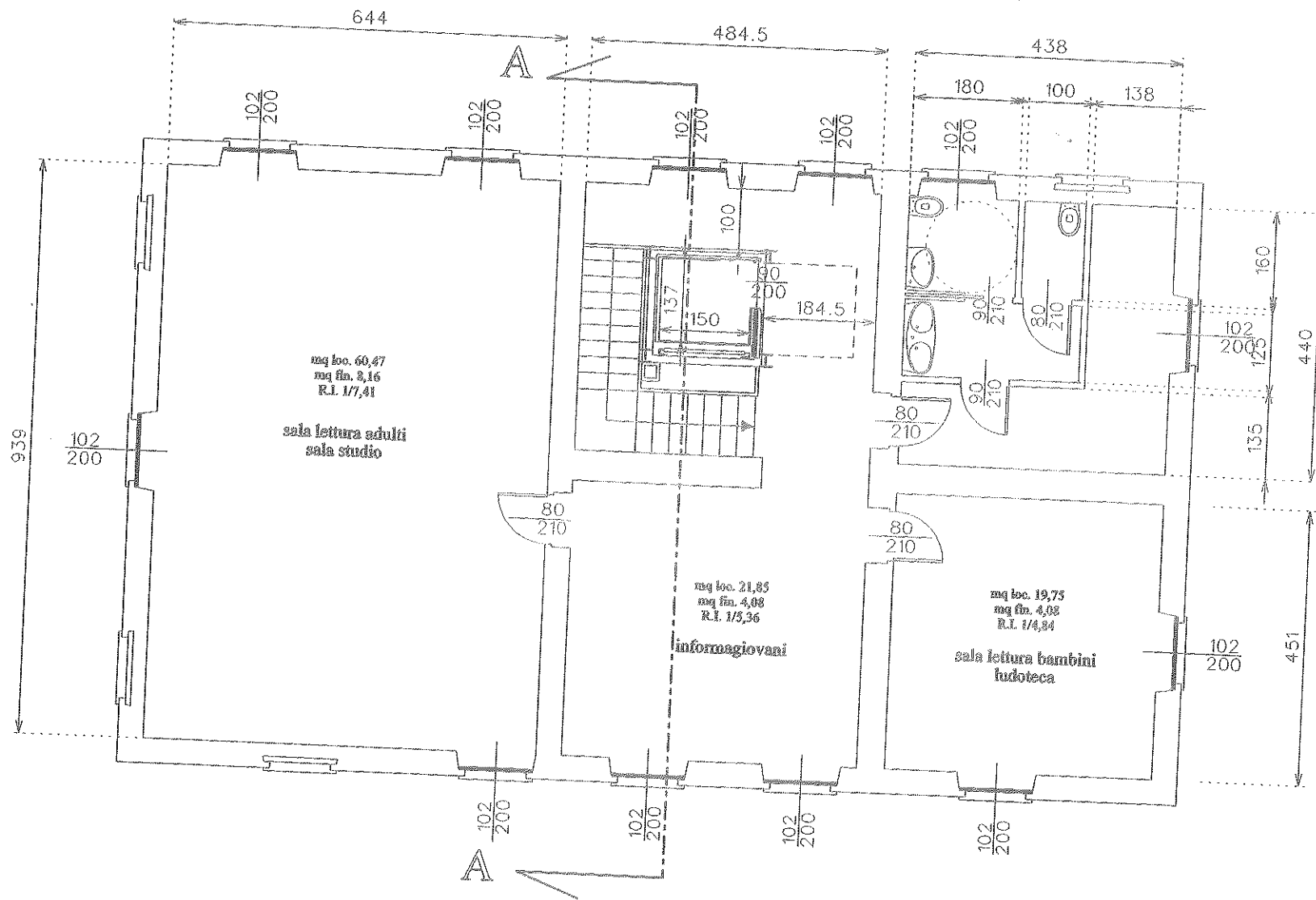


PIANTA PIANO TERRENO



PIANTA PIANO PRIMO

75,70 x 9,40 = 711,26

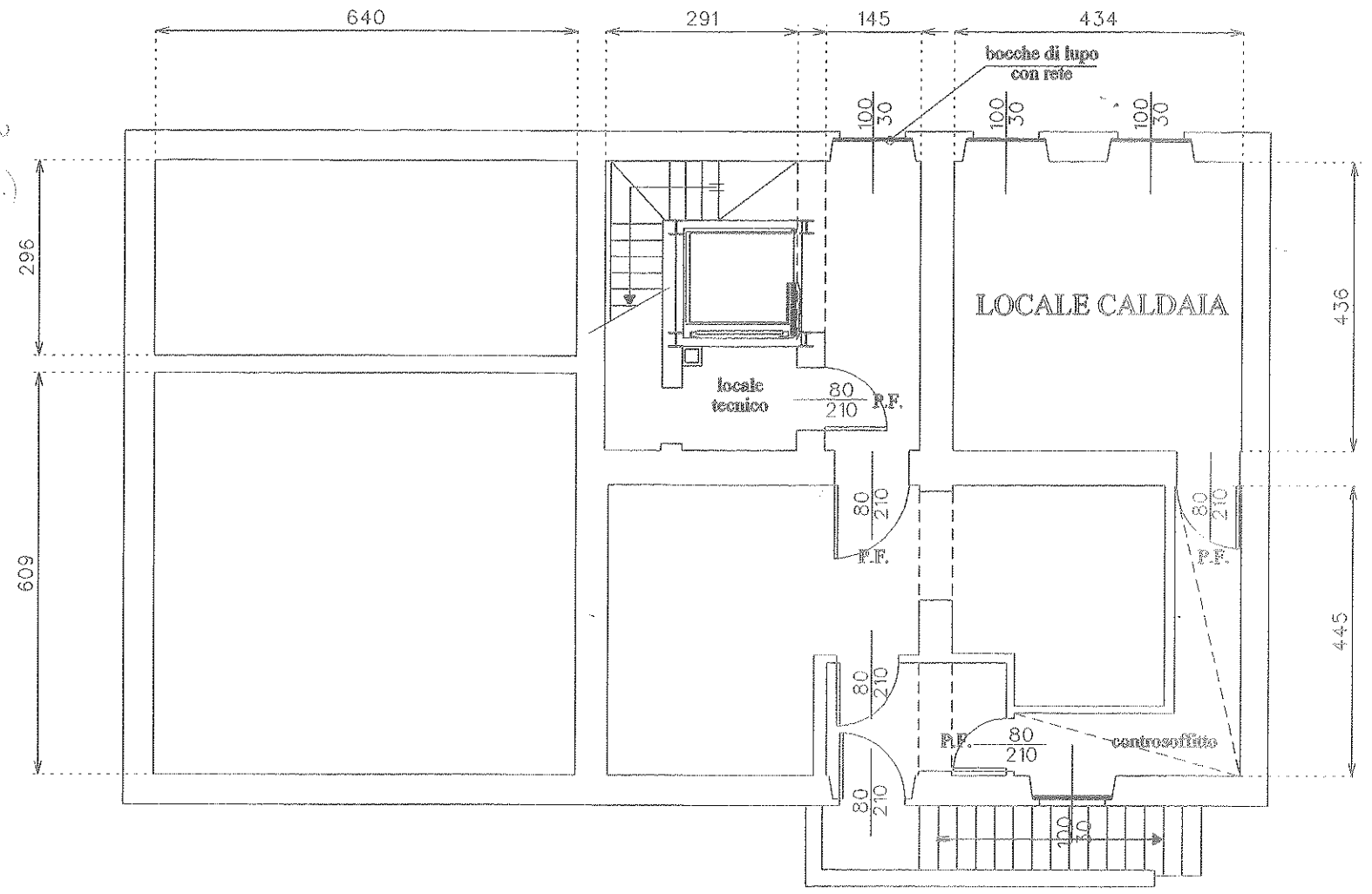
Il ...

+ 20 CT
 (4 + 436 + 436) = m 17,180
 x 20% = 3,44 (sterco)

CICLO CALDAIA
 (12,35) x 19 = 354,29
 CICLO RISCALDAMENTO
 (10,2) x 14 = 141,71

CICLO ALTA
 (9,40) x 31 = 295,16

DI AFFOLLAMENTO



PIANTA PIANO INTERRATO